

# BGF1001™

## E1 MONITORING SYSTEM



### Plug & Play system

Instantaneous monitoring of E1 and G.704 link

### Quick line status

All calls activity, errors and alarms report

### Stand-alone or part of a system

Used together with the TGA1012 system and MTX200 for multiple E1 lines control

## OVERVIEW

The plug & play system for PRI access Aethra® BGF1001™, is the best solution for every E1 user. BGF1001 is the right tool to understand where the problem on your E1 line is located.

Just plug the device toward the PRI access and verify, through appropriate LEDs, every aspect of physical layer and so the status of all alarms and errors present on line in both direction, from the Central and from the Terminal Equipment.

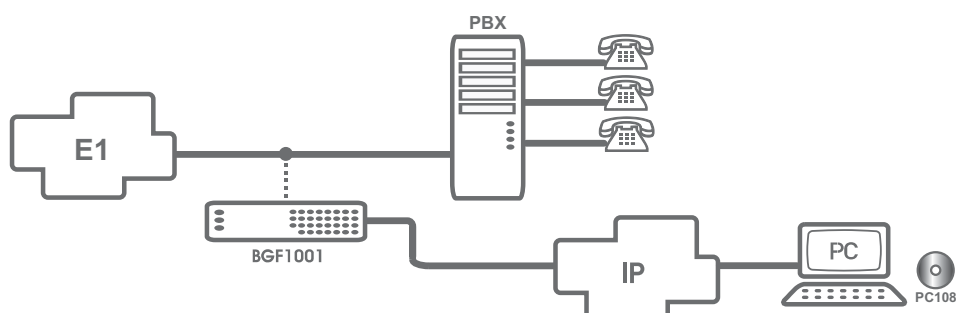
BGF1001 provides also synchronization and D channel information as well as activity and availability of each of the 30 B channels belonging to the access under analysis. Multi-colored LEDs interpret the status of the call from first setup to disconnection. Every channel's activity is available at a glance.

Like every Aethra®'s test sets, BGF1001 may be remotely managed and controlled via RS232 or Ethernet port for different purposes such as access monitoring activities. In conjunction with rackshelf TGA1012 PRI monitoring device and MTX200 matrix, the system will become definitively the easiest and useful tool aimed to continuous monitoring, maintenance and troubleshooting for multiple E1 lines.

## FEATURES AT A GLANCE

- Reliable plug & play device for quick and simple PRI line analysis
- Remote management through RS232 serial or Ethernet port
- B channels activity with multi-colored LEDs and call status report
- Easy alarms, errors and synchronization detection from user and network direction
- Layer 2 and Layer 3 D channel activity
- Aimed to Call Center, Bank, Government

## OPERATING MODES



## TECHNICAL SPECIFICATIONS

### TELECOM INTERFACES

- Primary Rate Access E1 ITU-T (CCITT) Rec.I.431, G.704 ETS 300 011

### PROTOCOLS SUPPORTED

- On board monitor EDSS-1, Q.SIG, 1TR6, VN4
  - Under development TN1R6®, DASS-2, DPNSS, CorNet®
- Other protocols available by PC V.5.1, V.5.2, NI1, DMS100, 5ESS

### CONNECTORS

- Primary access interface High-impedance RJ45 (ISO 8877)
- Measuring point 75/120 Ohm, PMP
- Remote control port DB9, RS232, Ethernet 10/100BT

### ENVIRONMENTAL CHARACTERISTICS

- Standard 2U 19" standard rack
- Weight ≈1,7 kg
- Dimensions (mm) 281 (w) x 171 (l) x 56 (d)
- Power
  - External AC/DC adapter 110/230Vac ±10% @ 50/60 Hz
- Miscellaneous N2 or N3 19" rack mount adapters

### TEMPERATURE

- Storage/Transport - 25°C to +55°C
- Operating, nominal - 0°C to +45°C
- Operating, limits - 5°C to +50°C
- Humidity, non-condensing
  - ≤ 93% RH @ 40°C
  - ≤ 70% RH @ 50°C

### REFERENCE REGULATION

- EMC aspects CEI EN 55022, CEI EN 55022 CEI EN 50082-1
- User's Safety Aspects CEI EN 60950
- CE Marking Class B (residential devices)

### SYNC, ALARMS AND ERROR DETECTED

- Synchronism FRAME, CRC
- Alarms LOS, LFA, AIS, RAI
- Errors CRC, CODE Violation, E-bit

### LAYER 2 LINK

- D channel activity No link, errors, link active

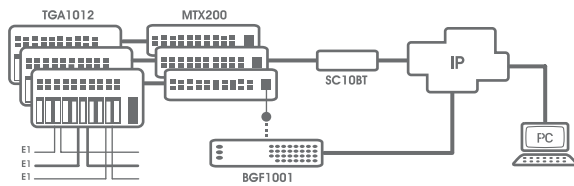
### CALL REPORT

- Status Setup, Active, Error, Aborted
- Direction Incoming, Outgoing
- Calls journaling Full report with time stamp, duration and disconnection cause by using PC108 Expert license

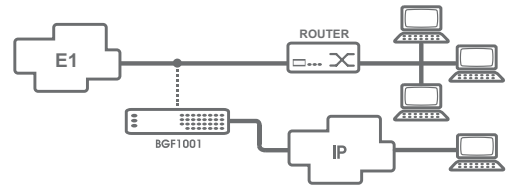
### OPTIONS

- MTX200 Automatic E1 access switching matrix
- PC108 for Windows™ Software for protocol decoding and data analysis
- TGA1012 External Layer 1 monitoring system for 12 lines

### MULTIPLE E1s MONITORING SYSTEM



### BACKUP LINES MONITORING



Aethra SpA  
Telecommunications  
via Matteo Ricci 10  
60020 Ancona - Italy  
Telephone +39.071.218981  
Fax +39.071.887077  
Video 1 +39.071.2189160  
Video 2 +39.071.2189701  
Email: [info.aethra@aethra.com](mailto:info.aethra@aethra.com)  
[www.aethra.com](http://www.aethra.com)

Aethra, Inc.  
701 Brickell Avenue  
Suite 1390  
Miami, FL 33131 USA  
Telephone +1.305.375.0010  
Toll Free (US only) 1.888.4.AETHRA  
Fax +1.305.375.0655  
Video +1.305.577.3524  
Email: [info.na@aethra.com](mailto:info.na@aethra.com)